



Xbutton Tool

099-L08742-EW501

Observe additional system documents!

30.01.2015

Register now!
For your benefit
Jetzt Registrieren
und Profitieren!

www.ewm-group.com



General instructions

CAUTION



Read the operating instructions!

The operating instructions provide an introduction to the safe use of the products.

- Read the operating instructions for all system components!
- Observe accident prevention regulations!
- Observe all local regulations!
- Confirm with a signature where appropriate.

NOTE



In the event of queries on installation, commissioning, operation or special conditions at the installation site, or on usage, please contact your sales partner or our customer service department on +49 2680 181-0.

A list of authorised sales partners can be found at www.ewm-group.com.

Liability relating to the operation of this equipment is restricted solely to the function of the equipment. No other form of liability, regardless of type, shall be accepted. This exclusion of liability shall be deemed accepted by the user on commissioning the equipment.

The manufacturer is unable to monitor whether or not these instructions or the conditions and methods are observed during installation, operation, usage and maintenance of the equipment.

An incorrectly performed installation can result in material damage and injure persons as a result. For this reason, we do not accept any responsibility or liability for losses, damages or costs arising from incorrect installation, improper operation or incorrect usage and maintenance or any actions connected to this in any way.

1 Contents

1	Contents	3
2	Overview	4
2.1	Brief description	4
2.2	Audience	4
2.2.1	IT administrator	4
2.2.2	Welding supervisor	4
2.3	System requirements	4
2.3.1	Client system requirements	4
2.4	Scope of supply	4
2.4.1	Standard scope of supply	4
2.4.2	Required accessories and licenses	4
3	Administrator manual	5
3.1	Installation	5
3.2	Wibu Runtime installation	8
3.3	FTDI USB driver installation	9
3.4	Update	11
4	User manual	12
4.1	Xbutton Tool screen layout	12
4.2	System role administration	13
4.2.1	Create system roles	13
4.2.2	Clean system roles	13
4.3	Template administration	14
4.3.1	Create template	14
4.4	User administration	16
4.4.1	Create user	16
4.4.2	Edit user	16
4.4.2.1	Edit user name	16
4.4.2.2	User/system role allocation	17
4.5	Xbutton administration	18
4.5.1	Create Xbutton	18
4.5.2	Edit Xbutton	19
4.5.3	Inactivate Xbutton	20
4.5.4	Overview of unallocated Xbuttons	20
5	Appendix A	21
5.1	Overview of EWM branches	21

2 Overview

2.1 Brief description

Xbutton is a system to intelligently control access rights for EWM welding machines equipped with an Expert 2.0 control. By programming small and handy storage chips for recognition, users can be assigned different usage rights.

The Xbutton Tool is used to manage the storage chips and users.

2.2 Audience

2.2.1 IT administrator

Based on their training and experience, the IT administrators are able to provide for the system requirements and work environment, including the technical equipment, required for operating the software. They are also able to provide sufficient server capacity and ensure data backup.

2.2.2 Welding supervisor

Based on their relevant vocational or further training, expertise, experience and knowledge of the different welding processes, the welding machine operator, welding engineer or welding supervisor is able to perform the task of monitoring and analysing the welding process data as assigned to them.

They are also able to operate the computers and access the operating panel.

2.3 System requirements

2.3.1 Client system requirements

Compatibility	IBM compatible
Hard disk	500 MB hard disk space or more
Connections	2 USB 2.0 ports or more
Operating system	Windows 7 or later
Software	.NET 4.0 (part of the installation if required)

2.4 Scope of supply

2.4.1 Standard scope of supply

The standard scope of supply includes:

- USB interface with Xbutton adapter
- Software
- Licensing dongle
- 10 Xbuttons

2.4.2 Required accessories and licenses

Xbutton is supplied with a dongle with an activated license to operate the Xbutton Tool.

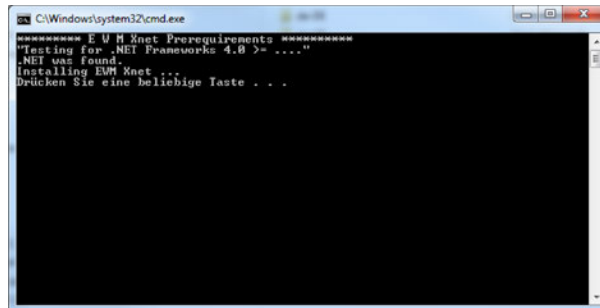
If you intend to operate Xnet and Xbutton at the same time, please contact EWM AG to transfer the license to the existing Xnet dongle.

3 Administrator manual

3.1 Installation

Initial situation: The dongle is connected to the computer.

- On the dongle, open the directory XbuttonTool\Release\.
- Start the "Setup.bat" installation file by double-clicking it.
 - A prompt opens to check whether .NET4.0 is installed on the system.



```
***** E W M Xnet Prerequisites *****
"Testing for .NET Framework 4.0 >> ...."
.NET was found.
Installing E W M Xnet ...
Drücken Sie eine beliebige Taste ...
```

Figure 3-1

- Press any key to close the prompt.
 - The installation welcome page opens.

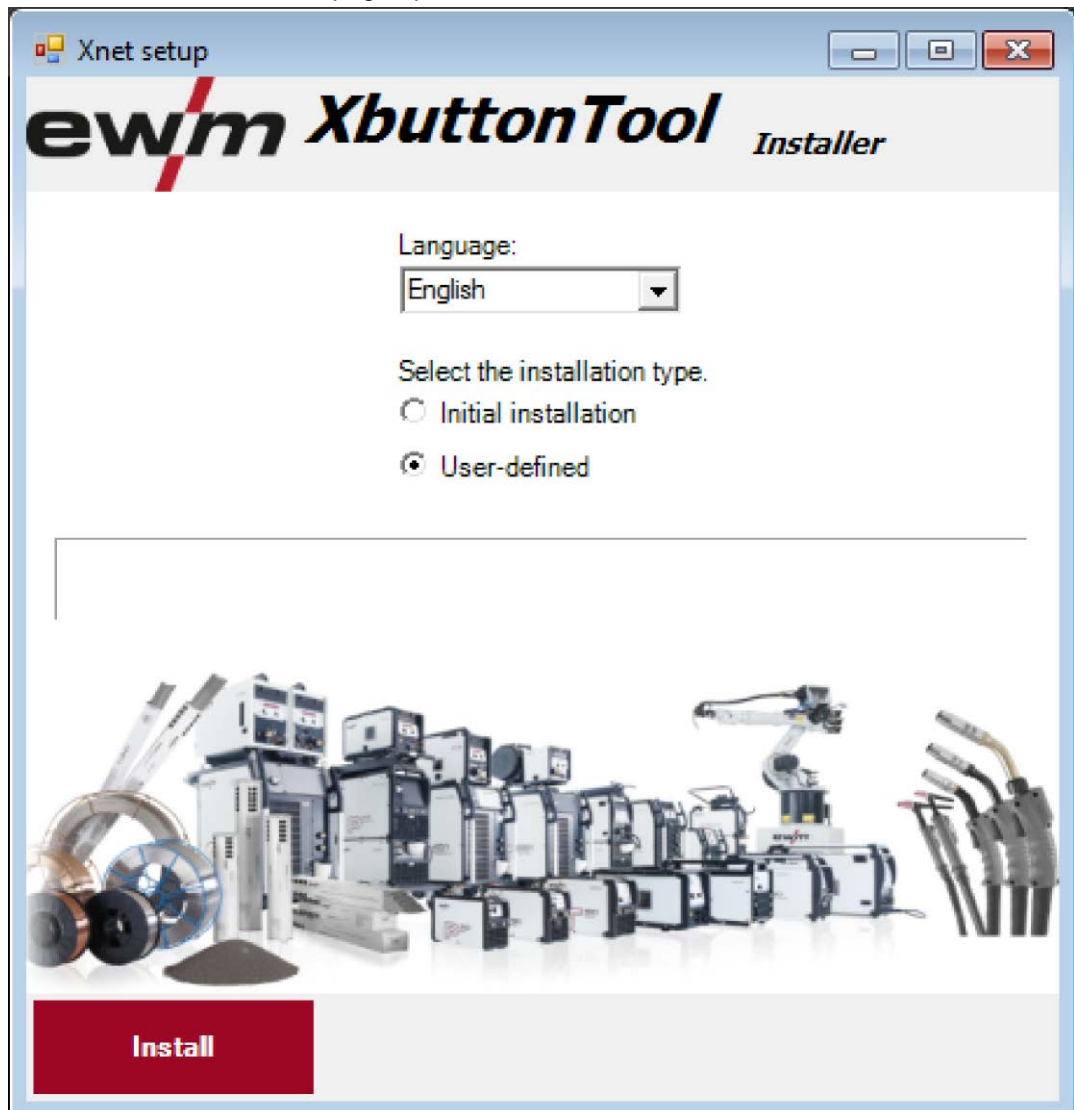


Figure 3-2

- Select the "User-defined" installation mode.

- Click the "Install" button.
 - The selection dialog with the available components opens.

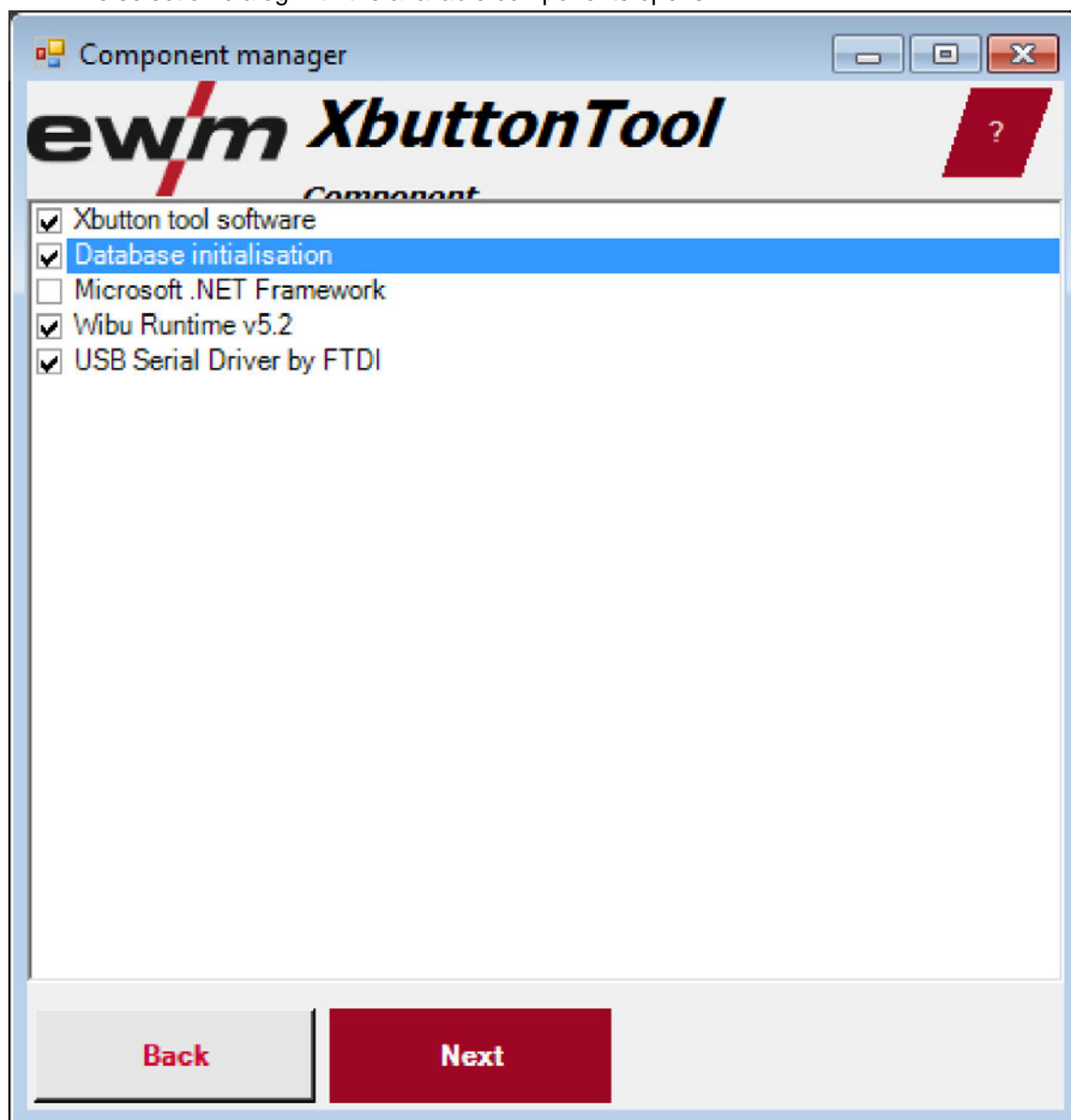


Figure 3-3

Component	Explanation
Xbutton Tool software	The Xbutton Tool software
Database initialisation	New creation of the database. Any existing database including its data will be overwritten.
Microsoft .NET Framework	Microsoft .NET Framework
Wibu Runtime	Driver for the dongle and software-based activation
USB Serial Driver by FTDI	Driver for the Xbutton USB interface

- Click "Next".
 - The parameter editor opens.

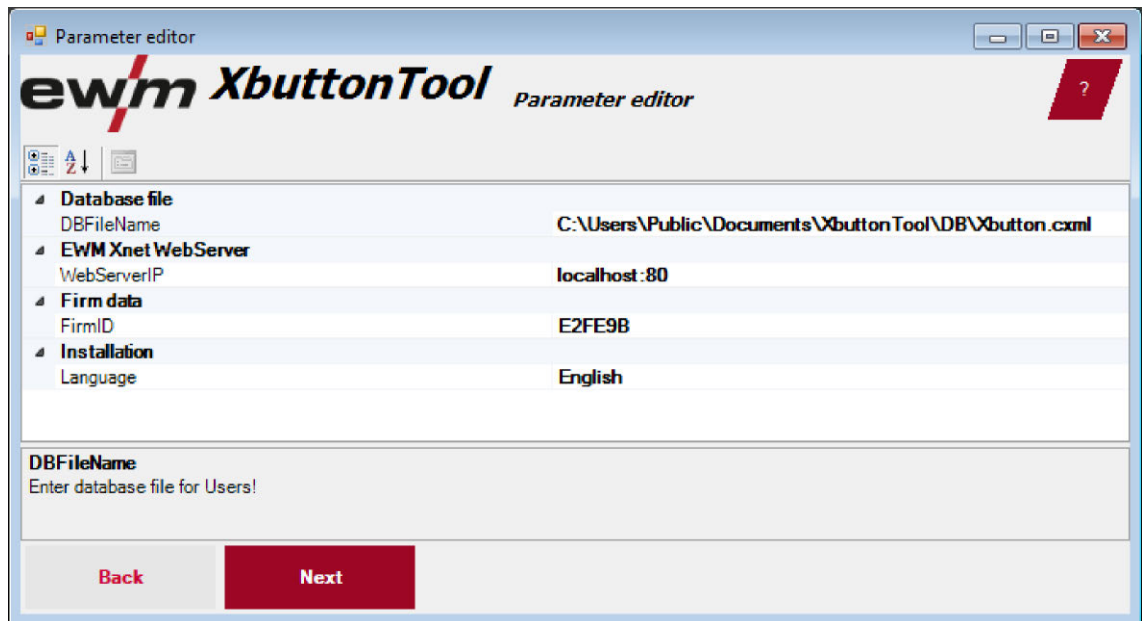


Figure 3-4

- Click "Next".
 - The software will be installed.

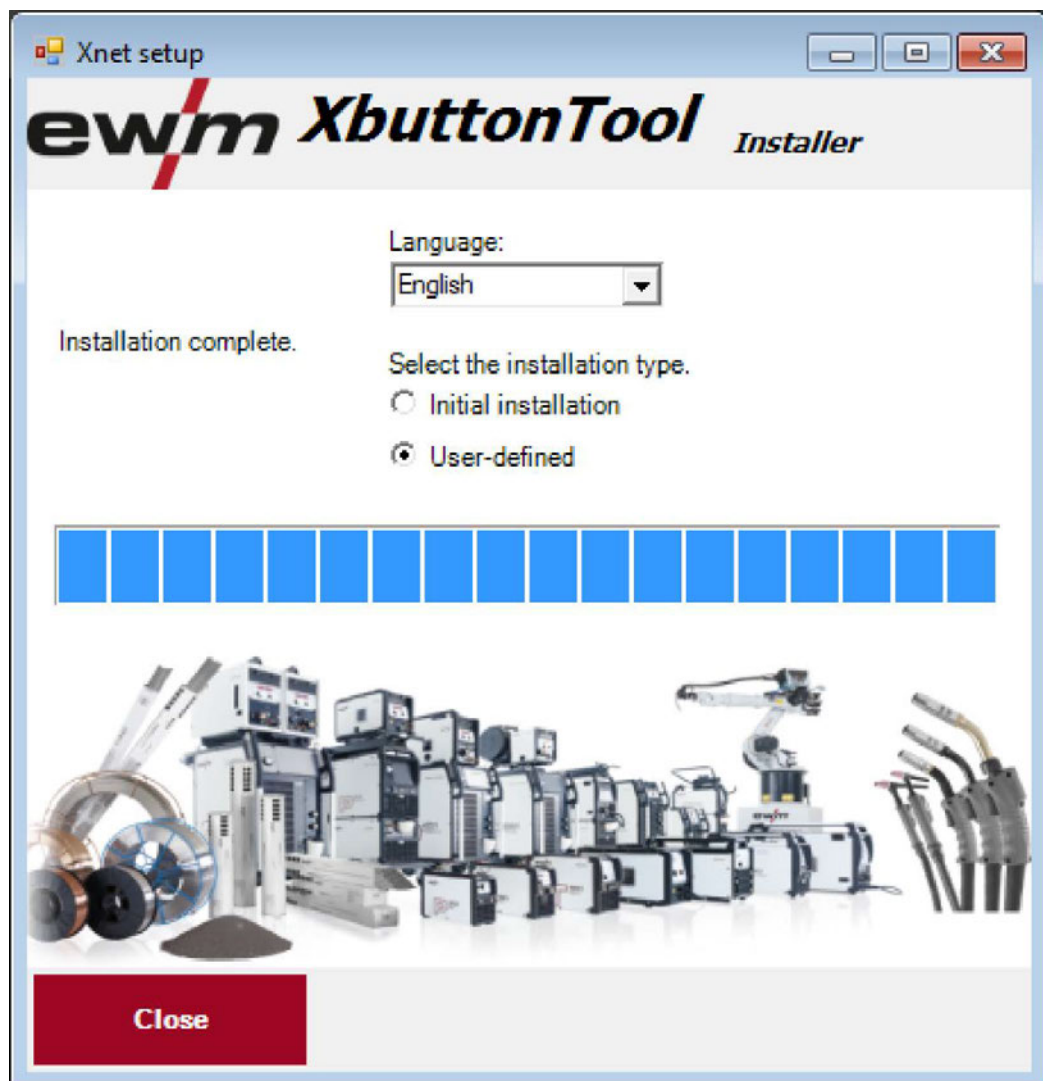


Figure 3-5

- Click "Close".

3.2 Wibu Runtime installation

To start Xbutton Tool, Wibu Runtime has to be installed. If not installed yet, the installation will start automatically.



Figure 3-6

- Click "Next".



Figure 3-7

- Select the "Install for all users of this computer" installation mode.
- Click "Next".

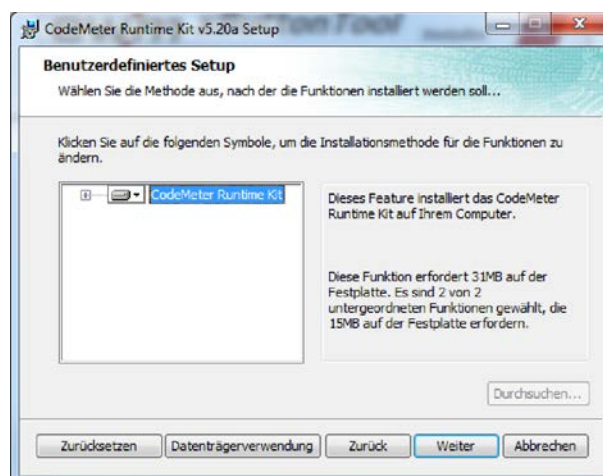


Figure 3-8

- Click "Next".



Figure 3-9

- Click the "Install" button.
 - The software will be installed.



Figure 3-10

- Click "Finish".
 - The installation is complete.

3.3 FTDI USB driver installation

The FTDI USB driver is a required component to control the Xbutton USB interface. If not installed yet, the installation will start automatically.

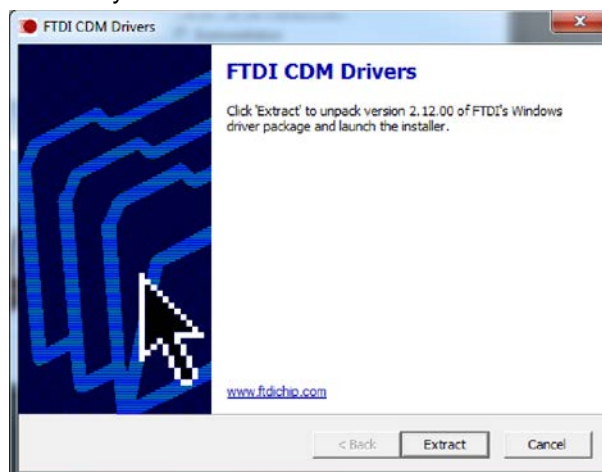


Figure 3-11

- Click "Extract".

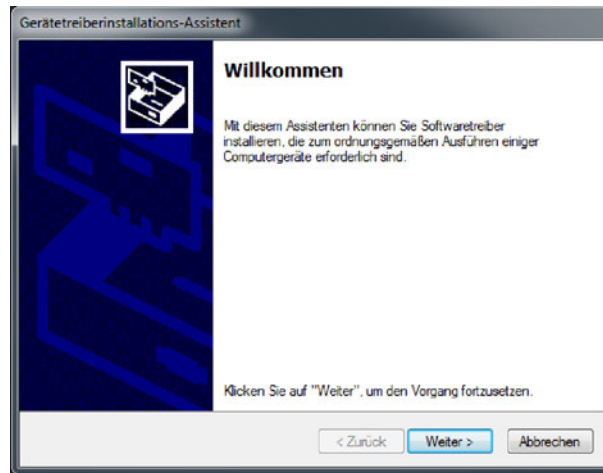


Figure 3-12

- Click "Next".

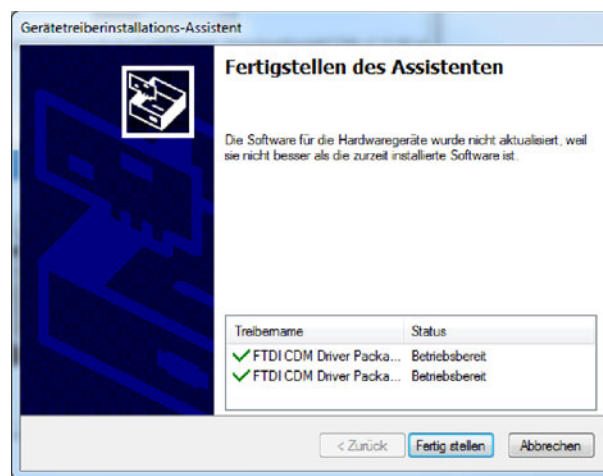


Figure 3-13

- Click "Finish".
 - The software will be installed.

3.4 Update

The update procedure is similar to the installation, with the exception that you have to deselect the "Database initialisation" option in the available components list.

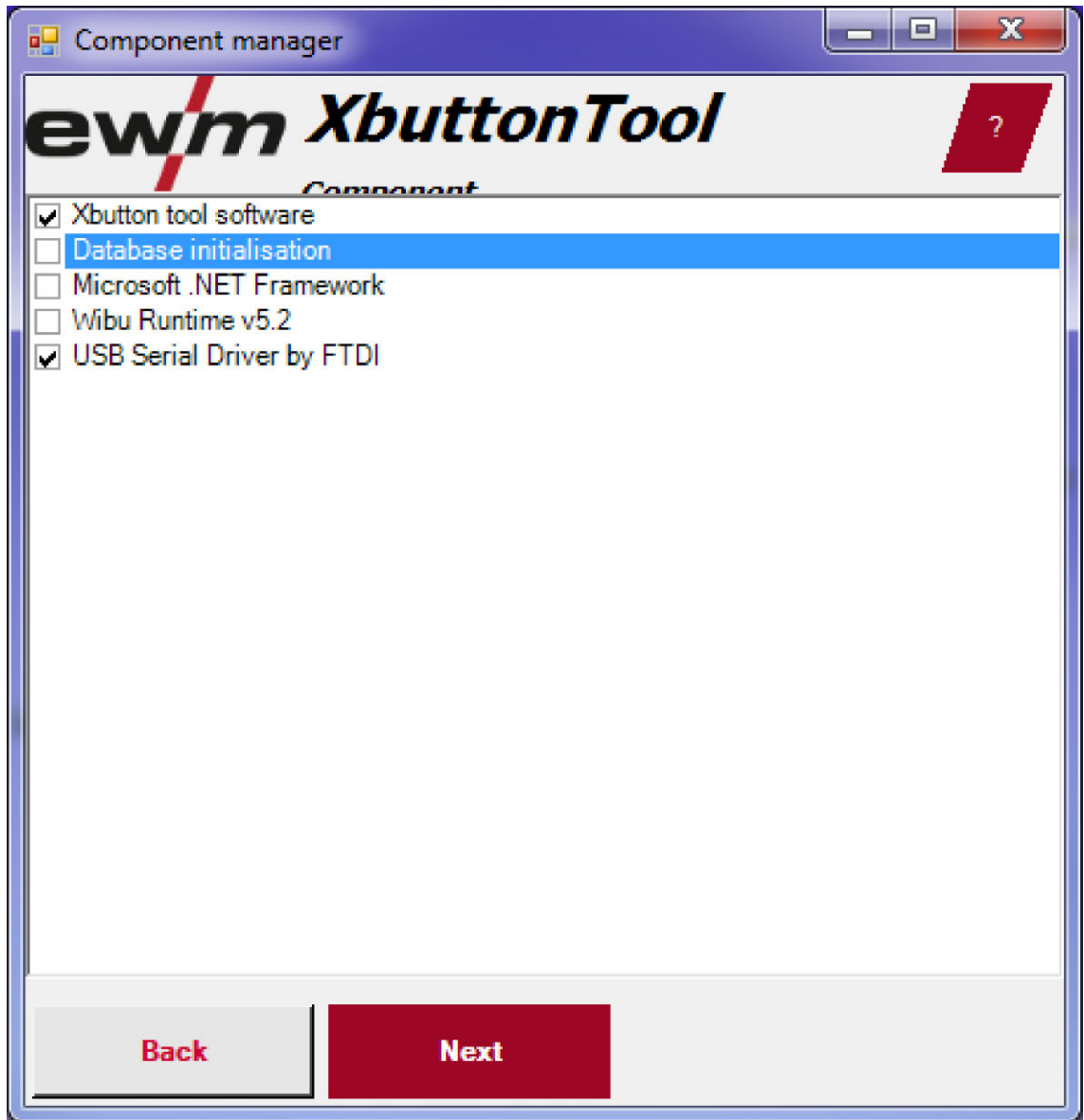


Figure 3-14

NOTE



If you fail to deselect "Database initialisation" and the installation starts, the existing database will be deleted and all data will be permanently lost.

4 User manual

4.1 Xbutton Tool screen layout

For a clearer overview the screen display is divided into three main sections in this manual: navigation bar, dialog and button bar.

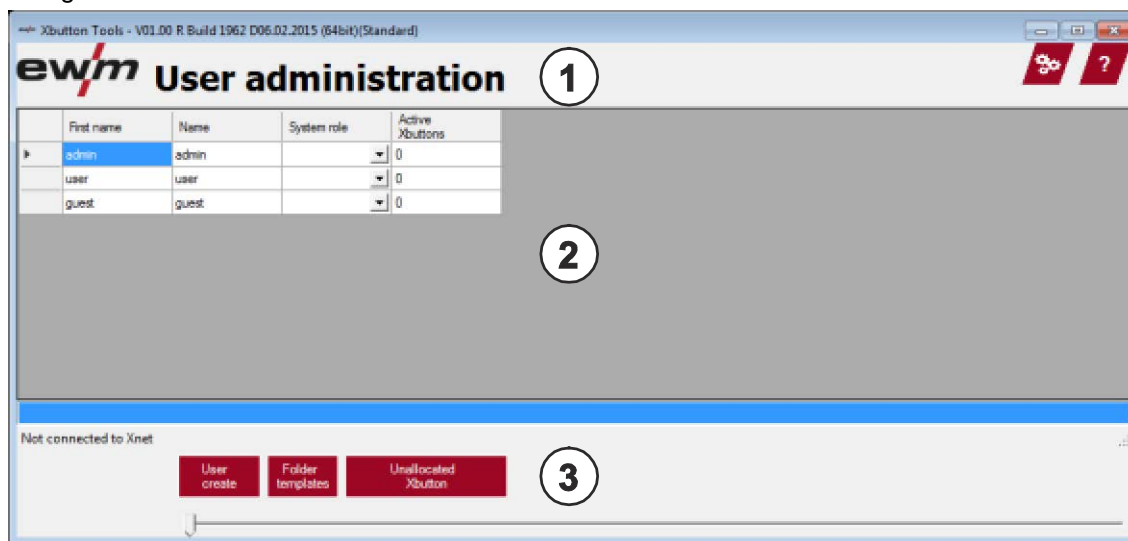


Figure 4-1

Item	Description
1	Navigation bar
2	Dialog
3	Button bar

4.2 System role administration

System roles are used to define groups of users. A system role represents an assigned function or access right.

When logging on to an Expert 2.0 control, the system role will be displayed as well.

4.2.1 Create system roles

Initial situation: Program has been started.

- Click the "Settings" button in the navigation bar.
 - The Settings dialog opens.

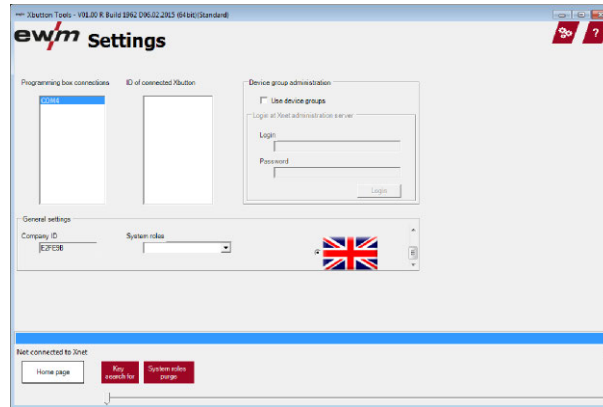


Figure 4-2

Clicking the arrow on to the "System roles" selection field will open the system roles that have already been created.

- In the "System roles" selection field, enter the name of the new system role.
- Save your changes by pressing "Enter".

4.2.2 Clean system roles

Xbutton is supplied with a number of predefined system roles. Their colour correlates to the available Xbuttons.

As long as no data records have been created, these system roles can be deleted if they do not match your needs. For this reason it is recommended to set the system roles before you start programming the Xbuttons.

Initial situation: Program has been started and the user has opened the "Settings" menu.

- Click the "Clean system roles" button on the button bar.
 - All system roles not currently used will be deleted from the database.

4.3 Template administration

Templates are used to define frequently used groups of user rights to facilitate the assignment of those rights to the users.

4.3.1 Create template

Initial situation: Program has been started.

- Connect a new Xbutton to the programming device.

NOTE

If the Xbutton is not yet known to the system the following dialog opens: "Unknown Xbutton. Do you want to add it to the database? Confirm by clicking "Yes".

- The Xbutton data will be displayed.

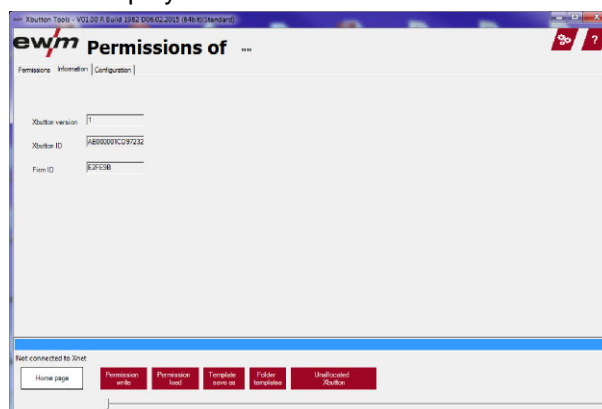


Figure 4-3

- Click the "Permissions" tab.
 - The Xbutton permissions will be displayed.

Permission	Explanation
Activate correction mode	By selecting this option, the correction mode is activated for the user.
Block change of wire feed speed	Selecting this option will prohibit the user from changing the wire feed speed.
Block change of voltage correction	Selecting this option will prohibit the user from changing the voltage correction.
Block change of arc dynamics	Selecting this option will prohibit the user from changing the arc dynamics.
Block change of operating mode	Selecting this option will prohibit the user from changing the operating mode.
Block change of welding type	Selecting this option will prohibit the user from changing the welding type.
Block change of superPuls	Selecting this option will prohibit the user from activating superPuls.
Block JOB switching	Selecting this option will prohibit the user from changing the welding JOB.
Block JOB reset	Selecting this option will prohibit the user from resetting the welding JOB.
Restrict program selection	Selecting this option will prohibit the user from selecting certain welding programs.
Restrict program sequence	Selecting this option will prohibit the user from accessing certain welding program sequences and changing their parameters.

Permission	Explanation
Block change of configuration parameters	Selecting this option will prohibit the user from changing the configuration parameters.
Block program "0"	Selecting this option will prohibit the user from accessing program "0".
Block welding start	Selecting this option will prohibit the user from starting the welding JOB.

NOTE

By selecting the „Show reserves“ option further permissions are shown which are currently not activated in the software. They can be used as reserves for software updates.

- Activate/inactivate the required rights.
- Click the "Save as template" button on the button bar.
 - The new template is saved in the system and is immediately available by clicking the "Templates folder" button.

4.4 User administration

In the user administration you can create all the users who are to be assigned Xbuttons.

4.4.1 Create user

Initial situation: Program has been started.

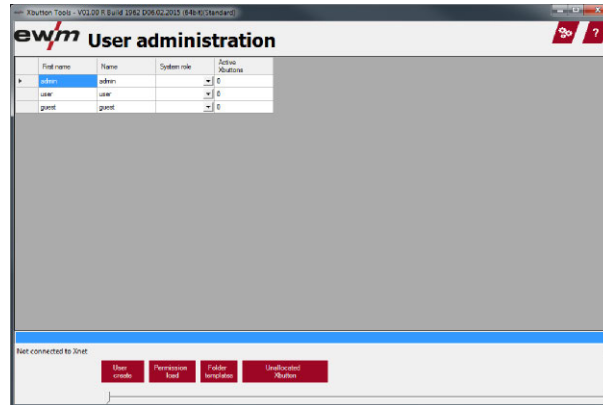


Figure 4-4

- Click the "Create user" button on the button bar.
 - At the end of the user table a new user is inserted with the first name "NewFirstname" and name "NewName" default values. To change these default values click the corresponding field.

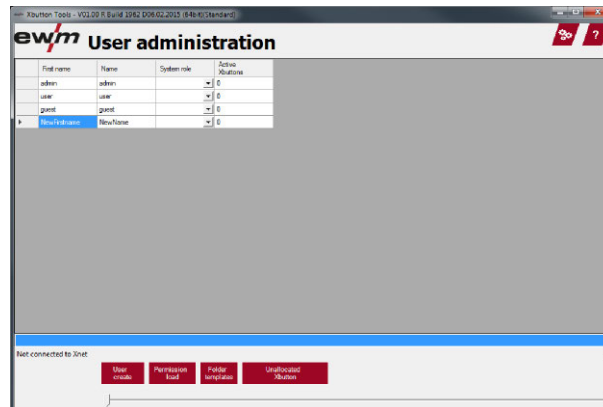


Figure 4-5

4.4.2 Edit user

4.4.2.1 Edit user name

NOTE

 **A user name can be edited only as long as no Xbutton has been created for this user.**

Initial situation: Program has been started and the user has been created.

- In the user table click the "First name" or "Name" field.
 - The data record selected will be highlighted in blue.
- Activate the edit mode by pressing F2.
- Change the data record as required.
- Save your changes by pressing "Enter".
- Dismiss your changes by pressing "Esc".

4.4.2.2 User/system role allocation

NOTE

 **A system role can be allocated to a user only as long as no Xbutton has been created for this user.**

Initial situation: Program has been started and the user has been created.

- In the "System role" column, click the arrow next to the user you want to edit.
 - The system roles created will be displayed.
- Select the required system role.
- Save your changes by pressing "Enter".
- Dismiss your changes by pressing "Esc".

4.5 Xbutton administration


The Xbutton is used to identify the user to the end device. The user-specific rights are stored on the Xbutton. One user can have multiple Xbuttons with different rights. A Xbutton, however, can only be assigned to one user.

4.5.1 Create Xbutton

Initial situation: Program has been started.

- Connect a new Xbutton to the programming device.


NOTE

 If the Xbutton is not yet known to the system the following dialog opens: "Unknown Xbutton. Do you want to add it to the database? Confirm by clicking "Yes".

- The Permissions dialog opens.

Permission	Explanation
Activate correction mode	By selecting this option, the correction mode is activated for the user.
Block change of wire feed speed	Selecting this option will prohibit the user from changing the wire feed speed.
Block change of voltage correction	Selecting this option will prohibit the user from changing the voltage correction.
Block change of arc dynamics	Selecting this option will prohibit the user from changing the arc dynamics.
Block change of operating mode	Selecting this option will prohibit the user from changing the operating mode.
Block change of welding type	Selecting this option will prohibit the user from changing the welding type.
Block change of superPuls	Selecting this option will prohibit the user from activating superPuls.
Block JOB switching	Selecting this option will prohibit the user from changing the welding JOB.
Block JOB reset	Selecting this option will prohibit the user from resetting the welding JOB.
Restrict program selection	Selecting this option will prohibit the user from selecting certain welding programs.
Restrict program sequence	Selecting this option will prohibit the user from accessing certain welding program sequences and changing their parameters.
Block change of configuration parameters	Selecting this option will prohibit the user from changing the configuration parameters.
Block program "0"	Selecting this option will prohibit the user from accessing program "0".
Block welding start	Selecting this option will prohibit the user from starting the welding JOB.

NOTE

 By selecting the „Show reserves“ option further permissions are shown which are currently not activated in the software. They can be used as reserves for software updates.

- Activate/inactivate the required permissions for the Xbutton or select a template from the "Use template" selection box.
- Assign a name to the Xbutton using the „New Xbutton name“ input field.

- Select the user to be assigned to the Xbutton from the "Name" selection box.
- Click the "Write permission" button on the button bar to save the changes.
- Click the "Home page" button on the button bar to dismiss the changes.

4.5.2 Edit Xbutton

Initial situation: Program has been started.

- Connect a Xbutton which has already been assigned rights to the programming device.
 - The Permissions dialog opens.

Permission	Explanation
Activate correction mode	By selecting this option, the correction mode is activated for the user.
Block change of wire feed speed	Selecting this option will prohibit the user from changing the wire feed speed.
Block change of voltage correction	Selecting this option will prohibit the user from changing the voltage correction.
Block change of arc dynamics	Selecting this option will prohibit the user from changing the arc dynamics.
Block change of operating mode	Selecting this option will prohibit the user from changing the operating mode.
Block change of welding type	Selecting this option will prohibit the user from changing the welding type.
Block change of superPuls	Selecting this option will prohibit the user from activating superPuls.
Block JOB switching	Selecting this option will prohibit the user from changing the welding JOB.
Block JOB reset	Selecting this option will prohibit the user from resetting the welding JOB.
Restrict program selection	Selecting this option will prohibit the user from selecting certain welding programs.
Restrict program sequence	Selecting this option will prohibit the user from accessing certain welding program sequences and changing their parameters.
Block change of configuration parameters	Selecting this option will prohibit the user from changing the configuration parameters.
Block program "0"	Selecting this option will prohibit the user from accessing program "0".
Block welding start	Selecting this option will prohibit the user from starting the welding JOB.

NOTE



By selecting the „Show reserves“ option further permissions are shown which are currently not activated in the software. They can be used as reserves for software updates.

- Activate/inactivate the required permissions for the Xbutton or select a template from the "Use template" selection box.
- Assign a name to the Xbutton using the „New Xbutton name“ input field.
- Select the user to be assigned to the Xbutton from the "Name" selection box.
- Click the "Write permission" button on the button bar to save the changes.
- Click the "Home page" button on the button bar to dismiss the changes.

4.5.3 Inactivate Xbutton

This function is used to temporarily neutralise a Xbutton. All permissions are reset to "not authorised" and the user entry on the Xbutton is deleted.

Initial situation: Program has been started.

- Connect a Xbutton which has already been assigned rights to the programming device.
 - The Permissions dialog opens.
- Select the user with the name "unallocated user" from the "Name" selection box.
- Click the "Write permission" button on the button bar to save the changes.
- Click the "Home page" button on the button bar to dismiss the changes.

NOTE



The inactivated Xbutton is stored in the "Unallocated" folder until it is allocated again to a user.

4.5.4 Overview of unallocated Xbuttons

Initial situation: Program has been started.

- Click the "Unallocated Xbuttons" button on the button bar.
 - The dialog opens the list of all inactivated Xbuttons which are assigned to the "unallocated user" in the system.

5 Appendix A

5.1 Overview of EWM branches

Headquarters

EWM AG
 Dr. Günter-Henle-Straße 8
 56271 Mündersbach · Germany
 Tel: +49 2680 181-0 · Fax: -244
 www.ewm-group.com · info@ewm-group.com

Technology centre

EWM AG
 Forststraße 7-13
 56271 Mündersbach · Germany
 Tel: +49 2680 181-0 · Fax: -144
 www.ewm-group.com · info@ewm-group.com



Production, Sales and Service

EWM AG
 Dr. Günter-Henle-Straße 8
 56271 Mündersbach · Germany
 Tel: +49 2680 181-0 · Fax: -244
 www.ewm-group.com · info@ewm-group.com

EWM HIGH TECHNOLOGY (Kunshan) Ltd.
 10 Yuanshan Road, Kunshan · New & Hi-tech Industry Development Zone
 Kunshan City · Jiangsu · Post code 215300 · People's Republic of China
 Tel: +86 512 57867-188 · Fax: -182
 www.ewm.cn · info@ewm.cn · info@ewm-group.cn

TEAMWELDER s.r.o.
 Tř. 9. května 718 / 31
 407 53 Jihkov · Czech Republic
 Tel: +420 412 358-551 · Fax: -504
 www.teamwelder.cz · info@teamwelder.cz

Sales and Service Germany

EWM AG
 Sales and Logistics Centre
 Sälzerstraße 20a
 56235 Ransbach-Baumbach · Tel: +49 2623 9276-0 · Fax: -244
 www.ewm-ransbach-baumbach.de · info@ewm-ransbach-baumbach.de

EWM AG
 Sales and Technology Centre
 Grünauer Fenn 4
 14712 Rathenow · Tel: +49 3385 49402-0 · Fax: -20
 www.ewm-rathenow.de · info@ewm-rathenow.de

EWM AG
 Rudolf-Winkel-Straße 7-9
 37079 Göttingen · Tel: +49 551-3070713-0 · Fax: -20
 www.ewm-goettingen.de · info@ewm-goettingen.de

EWM AG
 Sachsstraße 28
 50259 Pulheim · Tel: +49 2234 697-047 · Fax: -048
 www.ewm-pulheim.de · info@ewm-pulheim.de

EWM AG
 Eiserfelder Straße 300
 57080 Siegen · Tel: +49 271 3878103-0 · Fax: -9
 www.ewm-siegen.de · info@ewm-siegen.de

EWM HIGHTEC WELDING GmbH
 Sales and Technology Centre
 Draissstraße 2a
 69469 Weinheim · Tel: +49 6201 84557-0 · Fax: -20
 www.ewm-weinheim.de · info@ewm-weinheim.de

EWM Schweißtechnik Handels GmbH
 Karlsdorfer Straße 43
 88069 Tettngang · Tel: +49 7542 97998-0 · Fax: -29
 www.ewm-tettngang.de · info@ewm-tettngang.de

EWM Schweißtechnik Handels GmbH
 Pfaffensteig 17
 89143 Blaubeuren · Tel: +49 7344 9191-75 · Fax: -77
 www.ewm-blaubeuren.de · info@ewm-blaubeuren.de

EWM Schweißtechnik Handels GmbH
 Heinkelstraße 8
 89231 Neu-Ulm · Tel: +49 731 7047939-0 · Fax: -15
 www.ewm-neu-ulm.de · info@ewm-neu-ulm.de

Sales and Service International

EWM HIGHTEC WELDING GmbH
 Wiesenstraße 27b
 4812 Pilsdorf · Austria · Tel: +43 7612 778 02-0 · Fax: -20
 www.ewm-austria.at · info@ewm-austria.at

EWM HIGH TECHNOLOGY (Kunshan) Ltd.
 Yuanshan Road, Kunshan · New & Hi-tech Industry Development Zone
 Kunshan City · Jiangsu · Post code 215300 · People's Republic of China
 Tel: +86 512 57867-188 · Fax: -182
 www.ewm.cn · info@ewm.cn · info@ewm-group.cn

EWM HIGHTEC WELDING UK Ltd.
 Unit 2B Coopies Way · Coopies Lane Industrial Estate
 Morpeth · Northumberland · NE61 6JN · Great Britain
 Tel: +44 1670 505875 · Fax: -514305
 www.ewm-morpeth.co.uk · info@ewm-morpeth.co.uk

EWM HIGHTEC WELDING Sales s.r.o. / Prodejní a poradenské centrum
 Tyršova 2106
 256 01 Benešov u Prahy · Czech Republic
 Tel: +420 317 729-517 · Fax: -712
 www.ewm-benesov.cz · info@ewm-benesov.cz

 Plants

 Branches

● More than 400 EWM sales partners worldwide